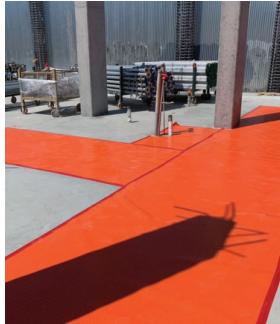


**cover** ( **guard** )<sup>®</sup>  
every way protected™



**TEMPORARY SURFACE PROTECTION**  
Construction Product Catalog

**1.800.422.5684**

**[www.coverguard.com](http://www.coverguard.com)**

# PRODUCT INFORMATION

## Features / Benefits

The cover guard® line of Polyethylene Temporary Surface Protection Materials are available in both **CG Flame-Retardant** and **CG2 Non-Flame Retardant** formulations.



### Product Features / Benefits:

- Durable
- Waterproof
- Reusable
- Puncture / tear-resistant
- Easy to install / labor saving installation and removal
- Reduces /eliminates costly repair / replacement
- Can be cleaned and reused
- Can be disinfected in medical applications
- Resistant to most chemicals / solvents
- Used in horizontal and vertical applications
- Used on internal and exterior projects
- Available in: 10, 13, 25 & 40 Mil thickness in "Diamond Plate" embossed finish  
36" and 72" Widths
- Available in 20 Mil x 48"W smooth finish flame-retardant formulation
- Available in 30 Mil x 36"W smooth finish flame-retardant formulation
- Provided in "rolled" form
- All products are proudly manufactured in the USA



# PRODUCT INFORMATION

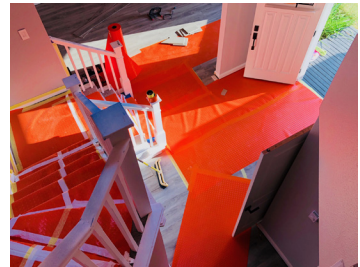
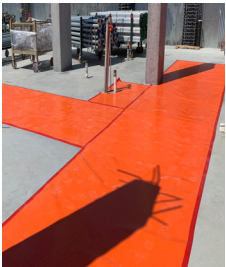
## Industries Served



Ideal for protecting surfaces against damage from typical trade activity as well as normal wear and tear.

### Industries Served:

- **New Construction**
- **Renovation**
- **Rehab / Refurbishment**
- **Restoration**
- **Flooring / Tile / Hardwood**
- **Marine**
- **Medical**
- **Education**
- **Facility Management**
- **Power Plant / Energy**
- **Commercial / Industrial / Residential**
- **Electrical / Mechanical**
- **Dry Wall**
- **Paint**



# CG Blue Flame-Retardant Formulation

- Available in: 10, 13, 25 & 40 Mil Thicknesses in Diamond Plate (DP) Embossed Finish
  - 36" and 72" Widths
  - 10 Mil Also Available in 36"W x 100'L Short Rolls (DPSR)
- Available in 20 Mil x 48"W x 100'L Smooth Finish (SF)
- Available in 30 Mil x 36"W x 100'L Smooth Finish (SF)
- All CG "Blue" Flame-Retardant Products Are Certified To NFPA 701
- Diamond Plate Embossed Design meets ASTM 1028-07 Anti-Slip Certification

## cover guard® Flame Retardant

Blue diamond plate temporary surface protection for construction applications.

Product	Part Number	Width (in.)	Length (ft.)	Area (sq. ft.)	Weight/Roll (lbs.)	Rolls Per (skid)
10 mil x 36" FR	CG1036 DP	36	393	1,179	60	16
10 mil x 72" FR	CG 1072 DP	72	393	2,358	120	9
10 mil x 36" FR	CG 1036 DPSR	36	100	300	15	56
25 mil x 36" FR	CG 2536 DP	36	180	540	70	12
25 mil x 72" FR	CG 2572 DP	72	180	1,080	140	9
40 mil x 36" FR	CG 4036 DP	36	120	360	70	9
40 mil x 72" FR	CG 4072 DP	72	120	720	152	9
20 mil x 40" SF	CG 2048 SF	48	100	400	42	35 - 40
30 mil x 36" SF	CG 303610 SF	36	100	300	45	20 - 28
11 mil Seam Tape	CGTP03 BU	3	165	41	3	16/case



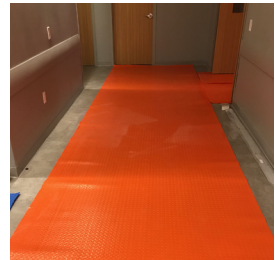
# CG2 Non-Flame Retardant Formulation

- Available in: 10, 25 & 40 Mil Thicknesses in Diamond Plate (DP) Embossed Finish
- (10 Mil available in 72" as "Special Order" Only / Minimum Quantities Apply)
- 10 Mil also available in 36" W x 100' L Short Rolls (DPSR)
- Diamond Plate Embossed Design meets ASTM 1028-07 Anti-Slip Certification

## cover guard® Non-Flame Retardant

Orange diamond plate temporary surface protection for construction applications.

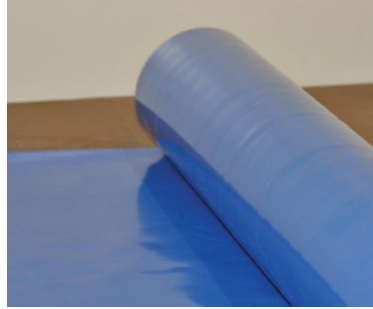
Product	Part Number	Width (in.)	Length (ft.)	Area (sq. ft.)	Weight/Roll (lbs.)	Rolls Per (skid)
10 mil x 36"	CG2 1036 DP	36	393	1,179	60	16
10 mil x 36"	CG2 1036 DPSR	36	100	300	15	56
25 mil x 36"	CG2 2536 DP	36	180	540	70	12
25 mil x 72"	CG2 2572 DP	72	180	1,080	140	9
40 mil x 36"	CG2 4036 DP	36	120	360	70	9
40 mil x 72"	*CG2 4072 DP	72	120	720	152	9



# SMOOTH FINISH Cover guard®

The cover guard® Smooth Finish products are for a variety of both horizontal as well as vertical applications where a smooth, flat finish protective material is preferred in lieu of the Diamond Plate design pattern.

- Durable
- Reusable
- Waterproof
- Puncture & Tear-Resistant
- Available in:
  - 20 Mil x 48"W x 100'L
  - 30 Mil x 36"W x 100'L

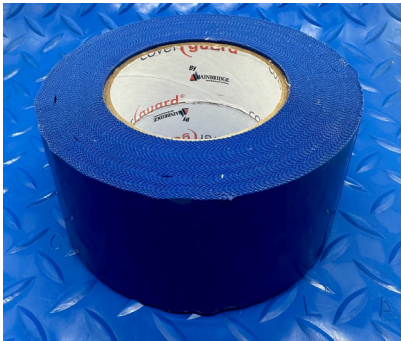


(See page 4 for more detailed size and specification information)

## Cover guard® SEAM TAPE Multi-Purpose Duct Tape

Cover guard® Polyethylene "Flame-Retardant" Seam Tape has a durable, moisture-resistant LDPE (polyethylene) backing with a rubber-based, pressure-sensitive adhesive. Bonds well to a variety of surfaces, removes cleanly and is easily unwound and installed. Blue color matches the CG "Blue" Flame-Retardant surface protection material.

Cover guard® Polyethylene Non-FR Seam Tape has all the characteristics as the Flame-Retardant formulation, less the FR additive. This Non-FR tape offering is orange in color to match the CG2 "Orange" surface protection material.



# What we have covered



Outdoor Application;  
Concrete Paver Protection



Airport Terminal;  
New Terrazzo Floor Protection



Home Renovation;  
Hardwood Floor Protection



Industrial Lab;  
Floor/Counter Protection



Interior Electrical Renovation;  
Floor Protection



COVID Field Hospital;  
Temporary Flooring



Outdoor Application;  
Concrete Protection



Commercial New Construction;  
Floor/Column Protection



Commercial Renovation;  
Corridor Floor Protection



255 Revere Street  
Canton, Massachusetts 02021  
USA

**cover (guard)**<sup>®</sup>  
every way protected™

## Temporary Surface Protection

∞

An integrated range of flame-retardant products used to protect surfaces during new construction, refurbishment and maintenance.

### Features:

- Internationally approved
- Easy Installation & removal
- Resistant to most liquids
- Puncture-resistant
- Durable & strong
- Waterproof
- Antistatic
- Reusable

**1.800.422.5684**

**[www.coverguard.com](http://www.coverguard.com)**