

cover (guard)[®]
every way protected[™]



TEMPORARY SURFACE PROTECTION
Construction Product Catalog

1.800.422.5684

www.coverguard.com

PRODUCT INFORMATION

Features / Benefits

The cover guard® line of Polyethylene Temporary Surface Protection Materials are available in both **CG Flame-Retardant** and CG3 Non-Flame Retardant formulations.



Product Features / Benefits:

- Durable
- Waterproof
- Reusable
- Puncture / tear-resistant
- Easy to install / labor saving installation and removal
- Reduces /eliminates costly repair / replacement
- Can be cleaned and reused
- Can be disinfected in medical applications
- Resistant to most chemicals / solvents
- Used in horizontal and vertical applications
- Used on internal and exterior projects
- Available in: 10, 25 & 40 Mil thickness in "Diamond Plate" embossed finish
36" and 72" Widths
- Available in 20 Mil x 48"W smooth finish flame-retardant formulation
- Available in 30 Mil x 36"W smooth finish flame-retardant formulation
- Provided in "rolled" form
- All products are proudly manufactured in the USA



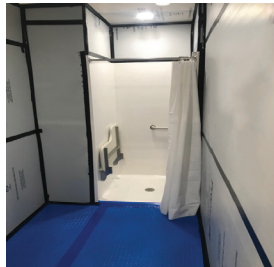
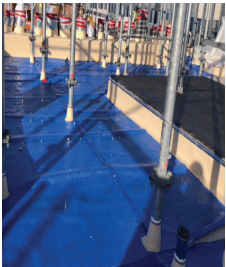
PRODUCT INFORMATION

Industries Served

Ideal for protecting surfaces against damage from typical trade activity as well as normal wear and tear.

Industries Served:

- **New Construction**
- **Renovation**
- **Rehab / Refurbishment**
- **Restoration**
- **Flooring / Tile / Hardwood**
- **Marine**
- **Medical**
- **Education**
- **Facility Management**
- **Power Plant / Energy**
- **Commercial / Industrial / Residential**
- **Electrical / Mechanical**
- **Dry Wall**
- **Paint**



CG Blue Flame-Retardant Formulation

- Available in: 10, 25 & 40 Mil Thicknesses in Diamond Plate (DP) Embossed Finish
 - 36" and 72" Widths
 - 10 Mil Also Available in 36"W x 100'L Short Rolls (DPSR)
- Available in 20 Mil x 48"W x 100'L Smooth Finish (SF)
- Available in 30 Mil x 36"W x 100'L Smooth Finish (SF)
- All CG "Blue" Flame-Retardant Products Are Certified To NFPA 701
- Diamond Plate Embossed Design meets ASTM 1028-07 Anti-Slip Certification

cover guard® Flame Retardant

Blue diamond plate temporary surface protection for construction applications.

Product	Part Number	Width (in.)	Length (ft.)	Area (sq. ft.)	Weight/Roll (lbs.)	Rolls Per (skid)
10 mil x 36" FR	CG1036 DP	36	393	1,179	60	16
10 mil x 72" FR	CG 1072 DP	72	393	2,358	120	9
10 mil x 36" FR	CG 1036 DPSR	36	100	300	15	56
25 mil x 36" FR	CG 2536 DP	36	180	540	70	12
25 mil x 72" FR	CG 2572 DP	72	180	1,080	140	9
40 mil x 36" FR	CG 4036 DP	36	120	360	70	9
40 mil x 72" FR	CG 4072 DP	72	120	720	152	9
20 mil x 48" SF	CG 2048 SF	48	100	400	42	35 - 40
30 mil x 36" SF	CG 303610 SF	36	100	300	45	20 - 28
7 mil Seam Tape	CGTP03 FRBU	3	180	41	3	16/case



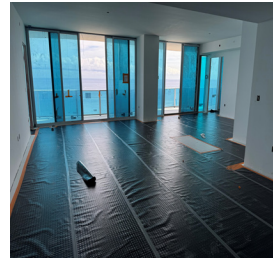
CG3 Non-Flame Retardant Formulation

- 100% Recycled Polyethylene
- Available in: 10, 25 & 40 Mil Thicknesses in Diamond Plate (DP) Embossed Finish
- (10 Mil available in 72" as "Special Order" Only / Minimum Quantities Apply)
- 10 Mil also available in 36" W x 100' L Short Rolls (DPSR)
- Diamond Plate Embossed Design meets ASTM 1028-07 Anti-Slip Certification

cover guard® Non-Flame Retardant

Black diamond plate temporary surface protection for construction applications.

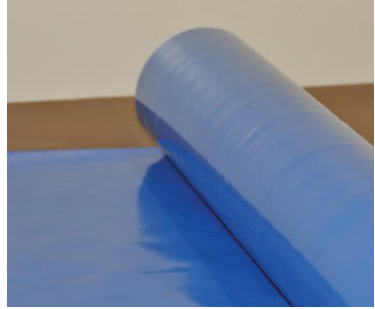
Product	Part Number	Width (in.)	Length (ft.)	Area (sq. ft.)	Weight/Roll (lbs.)	Rolls Per (skid)
10 mil x 36"	CG3 1036 DP	36	393	1,179	60	16
10 mil x 36"	CG3 1036 DPSR	36	100	300	15	56
25 mil x 36"	CG3 2536 DP	36	180	540	70	12
25 mil x 72"	CG3 2572 DP	72	180	1,080	140	9
40 mil x 36"	CG3 4036 DP	36	120	360	70	9
40 mil x 72"	CG3 4072 DP	72	120	720	152	9
7.5 mil seam tape	CG3 TP03BK	3	180	N/A	1.7	16/case



SMOOTH FINISH cover(guard)[®] every way protected™

The cover guard[®] Smooth Finish products are for a variety of both horizontal as well as vertical applications where a smooth, flat finish protective material is preferred in lieu of the Diamond Plate design pattern.

- Durable
- Reusable
- Waterproof
- Puncture & Tear-Resistant
- Available in:
 - 20 Mil x 48"W x 100'L
 - 30 Mil x 36"W x 100'L



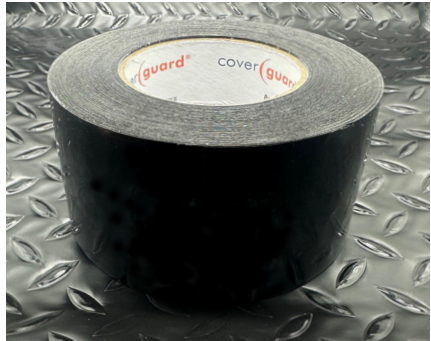
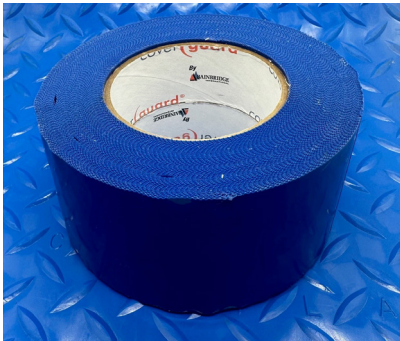
(See page 4 for more detailed size and specification information)

cover(guard)[®] SEAM TAPE every way protected™

Multi-Purpose Duct Tape

Cover guard[®] Polyethylene "Flame-Retardant" Seam Tape has a durable, moisture-resistant LDPE (polyethylene) backing with a rubber-based, pressure-sensitive adhesive. Bonds well to a variety of surfaces, removes cleanly and is easily unwound and installed. Blue color matches the CG "Blue" Flame-Retardant surface protection material.

Cover guard[®] Polyethylene "Non-FR Seam Tape" has all the characteristics as the Flame-Retardant formulation, less the FR additive. This Non-FR tape offering is black in color to match the CG3 "Black" surface protection material.



What we have covered



Industrial Lab;
Floor/Counter Protection



COVID Field Hospital;
Temporary Flooring



Interior Electrical Renovation;
Floor Protection



Airport Terminal;
New Terrazzo Floor Protection



Commercial New Construction;
Floor Protection



Commercial New Construction;
Floor Protection



255 Revere Street
Canton, Massachusetts 02021
USA

COVER **guard**[®]
every way protected™

Temporary Surface Protection

∞

An integrated range of flame-retardant products used to protect surfaces during new construction, refurbishment and maintenance.

Features:

- Internationally approved
- Easy Installation & removal
- Resistant to most liquids
- Puncture-resistant
- Durable & strong
- Waterproof
- Antistatic
- Reusable

1.800.422.5684

www.coverguard.com